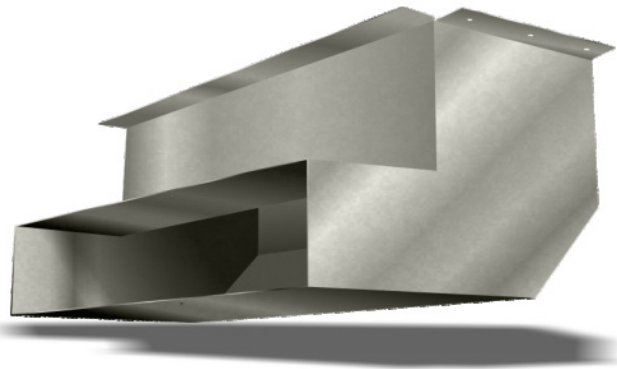


SLAB SOFFIT DISCHARGE



DESCRIPTION

The Prairie Heating slab soffit discharge is used for venting air from inside a building to the outside by way of going through the soffit.

CONSTRUCTION

Made of 22GA or 24GA galvanized. Made to be installed with 12" x 1.75" and 12" x 2" Prairie Heating slab duct.

FEATURES

- Firestop installed

GUARANTEE

Made in Canada. All Prairie Heating products are guaranteed against defective material. All testing performed by Intertek Testing Services NA Ltd. Warnock Hersey and Hardy Associates Ltd. Pressure rating (-1 to +2 water gauge).

OPTIONAL CONSTRUCTION

- Firestop material installed
- Optional damper installed
- Multiple throat dimensions

Contact Prairie Heating Products for availability, pricing, and lead time.

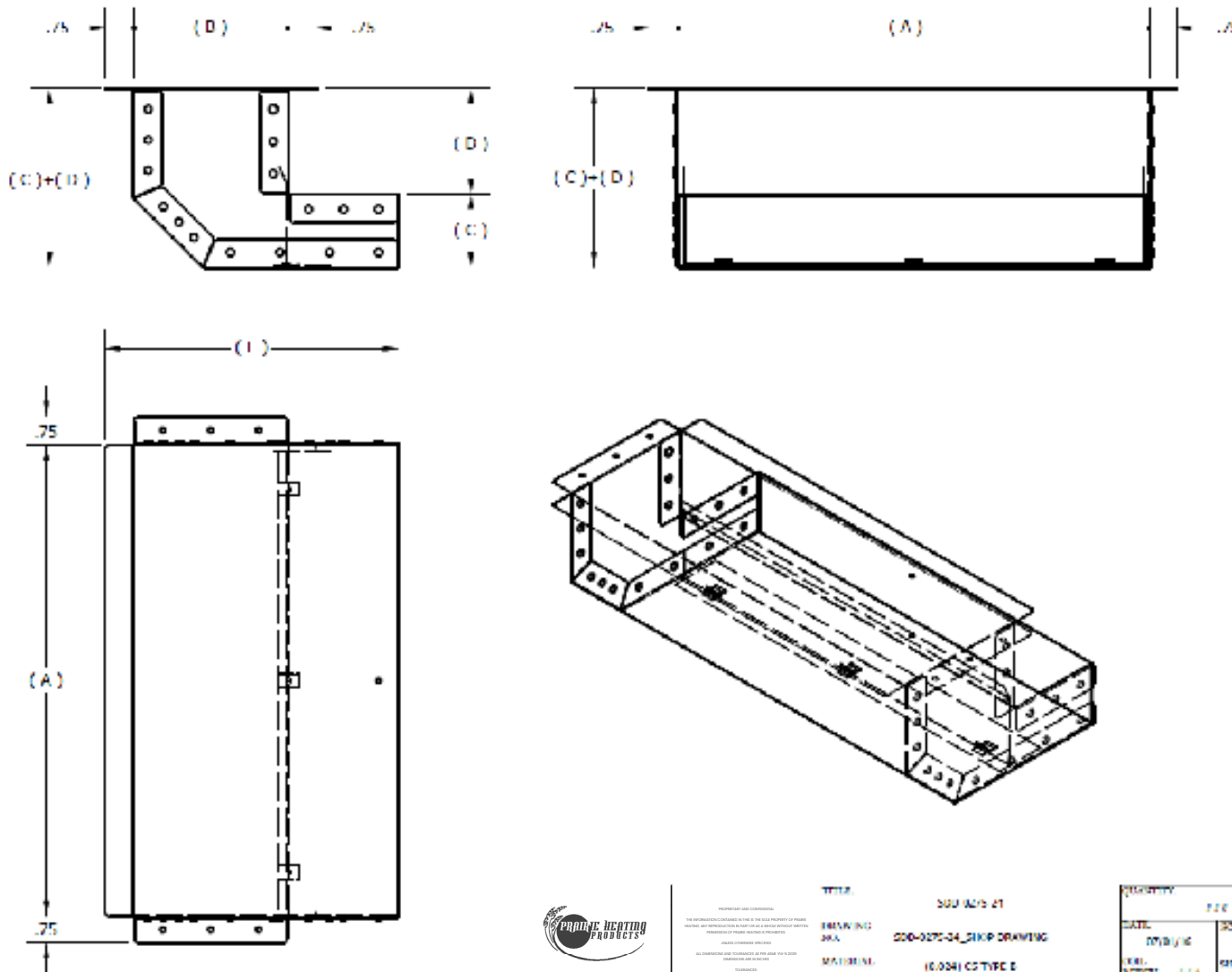
REPLACE SSD WITH SDD TO INCLUDE A DAMPER.

PRODUCT CODE	A (IN)	B (IN)	C (IN)	D (IN)	# PER CARTON
SSD/1218/24	12	4	1.8125	2.125	12
SSD/1275/24	12	4	1.86	2.75	10
SSD/1325/24	12	4	1.875	3.25	9

587-425-6426 | sales@prairieheating.ca | www.prairieheating.ca

Specifications are subject to change without notice or obligation. All Prairie Heating products are guaranteed against defective material.

SLAB SOFFIT DISCHARGE



sales@prairieheating.ca
www.prairieheating.ca
587-425-6426

PRairie HEATING PRODUCTS
10000 10th Street
Saskatoon, SK S0N 0L0
Canada

TITLE		QUANTITY	
DRAWING NO.	587-0275-04_SLOPP DRAWING	DATE	7/16
MATERIAL	16.0541 CS TYPE B GALVANIZED	REV.	07/16
FILE NUMBER	587	PRICE	587
		QUANTITY	587

587-425-6426 | sales@prairieheating.ca | www.prairieheating.ca

Specifications are subject to change without notice or obligation. All Prairie Heating products are guaranteed against defective material.

