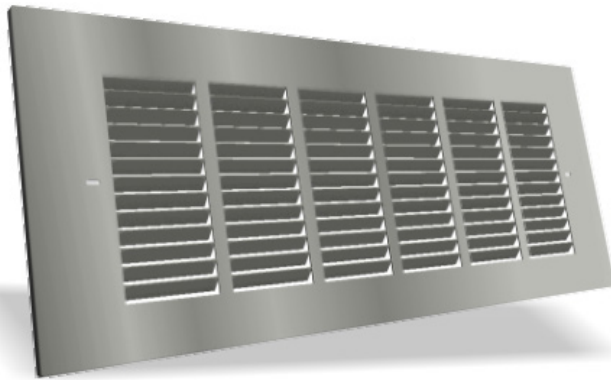


SLAB GRILL



DESCRIPTION

The Prairie Heating slab grill is used to cover Prairie Heating soffit or wall discharge openings to keep out bugs and weather.

CONSTRUCTION

Made from aluminum. Made to be installed with 12" x 1.75" and 12" x 2" Prairie Heating slab duct.

FEATURES

- Louvered for optimal air flow

GUARANTEE

Made in Canada. All Prairie Heating products are guaranteed against defective material. All testing performed by Intertek Testing Services NA Ltd. Warnock Hersey and Hardy Associates Ltd. Pressure rating (-1 to +2 water gauge)

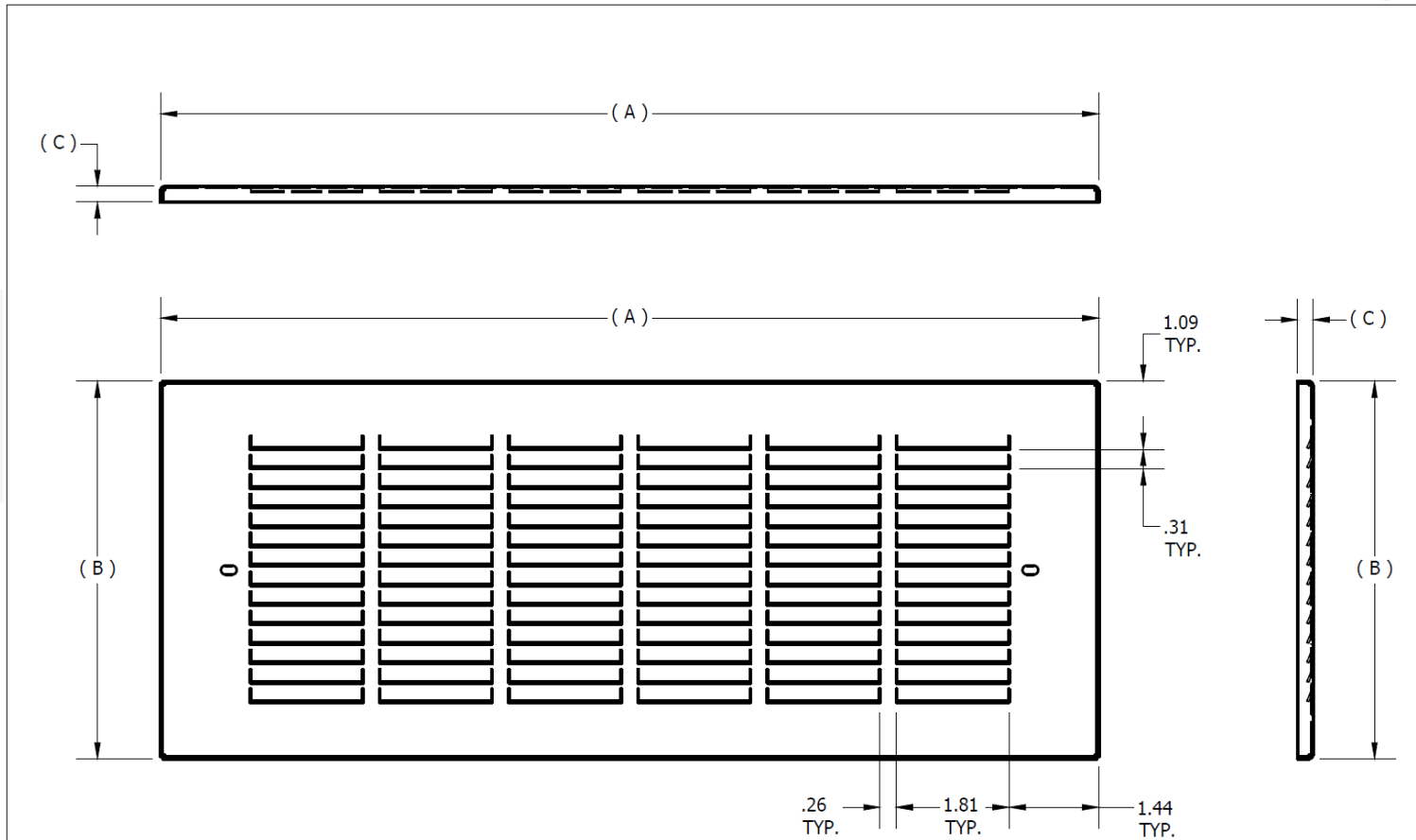
OPTIONAL CONSTRUCTION

Custom sizes available upon request to suit any and all applications.

Contact Prairie Heating Products for availability, pricing, and lead time.

PRODUCT CODE	A (IN)	B (IN)	C (IN)	# PER CARTON
SSG/00BT/AL	15.0625	6.0625	0.25	100

SLAB GRILL



sales@prairieheating.ca
www.prairieheating.ca
587-425-6426

TITLE.		QUANTITY.	
SSG-00BT-AL		###	
DRAWING NO.	SSG-00BT-AL_SHOP DRAWING	DATE.	SCALE.
		06/01/16	###
MATERIAL.	(0.032) ALUMINUM	COIL WIDTH.	SHEET.
		###	###
FILE LOCATION.	###	REVISION.	
		###	

587-425-6426 | sales@prairieheating.ca | www.prairieheating.ca

Specifications are subject to change without notice or obligation. All Prairie Heating products are guaranteed against defective material.