

# SLAB CONNECTING COLLAR



## DESCRIPTION

The Prairie Heating slab duct connecting collar is made to join two pieces of Prairie Heating slab duct together.

## CONSTRUCTION

Made of 22GA or 24GA galvanized complete with stamped duct stops so there is always the proper amount of lap for a strong joint. Made to be installed with 12" x 1.75" and 12" x 2" Prairie Heating slab duct.

## FEATURES

- Stamped duct stops
- 100% laser cut for accuracy
- Precut screw holes for quick installation
- Made to fit Prairie Heating slab duct

## GUARANTEE

Made in Canada. All Prairie Heating products are guaranteed against defective material.

## OPTIONAL CONSTRUCTION

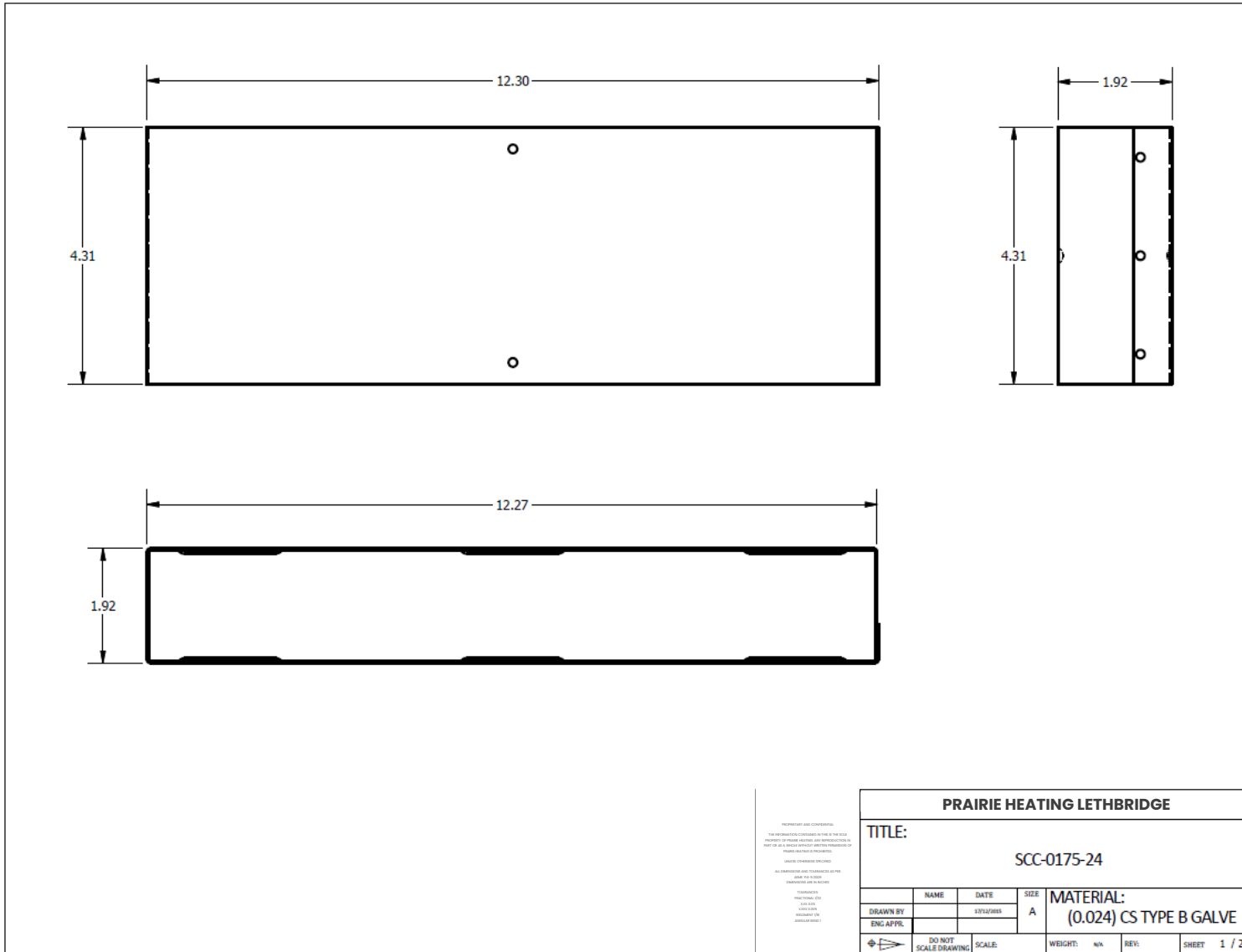
Custom sizes available upon request to suit any and all applications.

**Contact Prairie Heating Products for availability, pricing, and lead time.**



PRODUCT CODE	SIZE (IN)	CONSTRUCTION	# PER CARTON
SCC/1750/24	12 x 1.75	24GA	35
SCC/2000/24	12 x 2	24GA	35

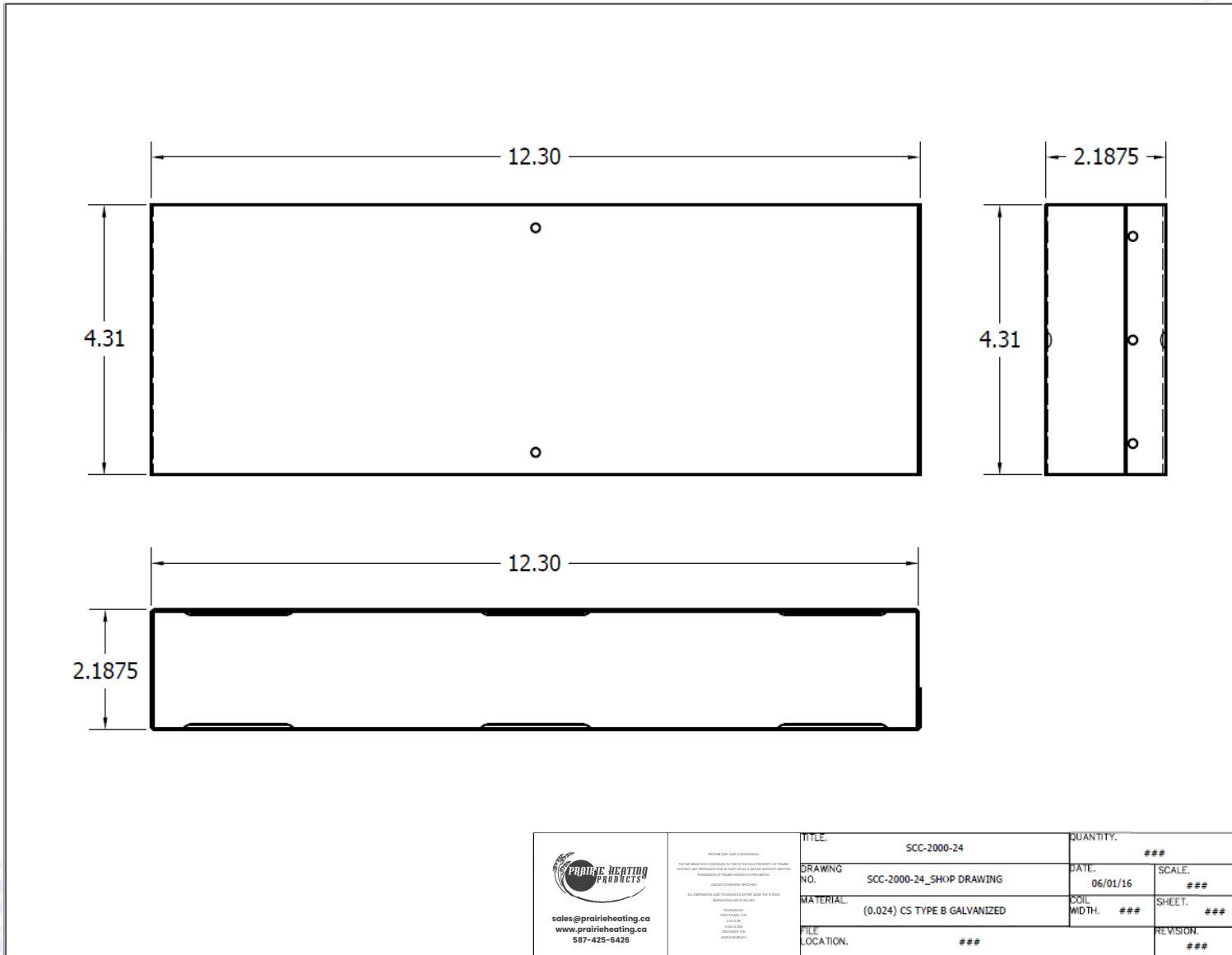
# SLAB CONNECTING COLLAR




587-425-6426 | sales@prairieheating.ca | www.prairieheating.ca

Specifications are subject to change without notice or obligation. All Prairie Heating products are guaranteed against defective material.

# SLAB CONNECTING COLLAR



 sales@prairieheating.ca www.prairieheating.ca 587-425-6426	ALL DIMENSIONS ARE DIMENSIONS UNLESS OTHERWISE SPECIFIED. UNLESS OTHERWISE SPECIFIED ALL DIMENSIONS ARE DIMENSIONS UNLESS OTHERWISE SPECIFIED. UNLESS OTHERWISE SPECIFIED	TITLE: SCC-2000-24 QUANTITY: ###	DATE: 06/01/16 SCALE: ###	
	DRAWING NO: SCC-2000-24_SHOP DRAWING	MATERIAL: (0.024) CS TYPE B GALVANIZED	COIL WIDTH: ### SHEET: ###	REVISION: ###
	FILE LOCATION: ###			

587-425-6426 | sales@prairieheating.ca | www.prairieheating.ca

Specifications are subject to change without notice or obligation. All Prairie Heating products are guaranteed against defective material.