

SLAB CONNECTING COLLAR



DESCRIPTION

The Prairie Heating slab duct connecting collar is made to join two pieces of Prairie Heating slab duct together.

CONSTRUCTION

Made of 22GA or 24GA galvanized complete with stamped duct stops so there is always the proper amount of lap for a strong joint. Made to be installed with 12" x 1.75" and 12" x 2" Prairie Heating slab duct.

FEATURES

- Stamped duct stops
- 100% laser cut for accuracy
- Precut screw holes for quick installation
- Made to fit Prairie Heating slab duct

GUARANTEE

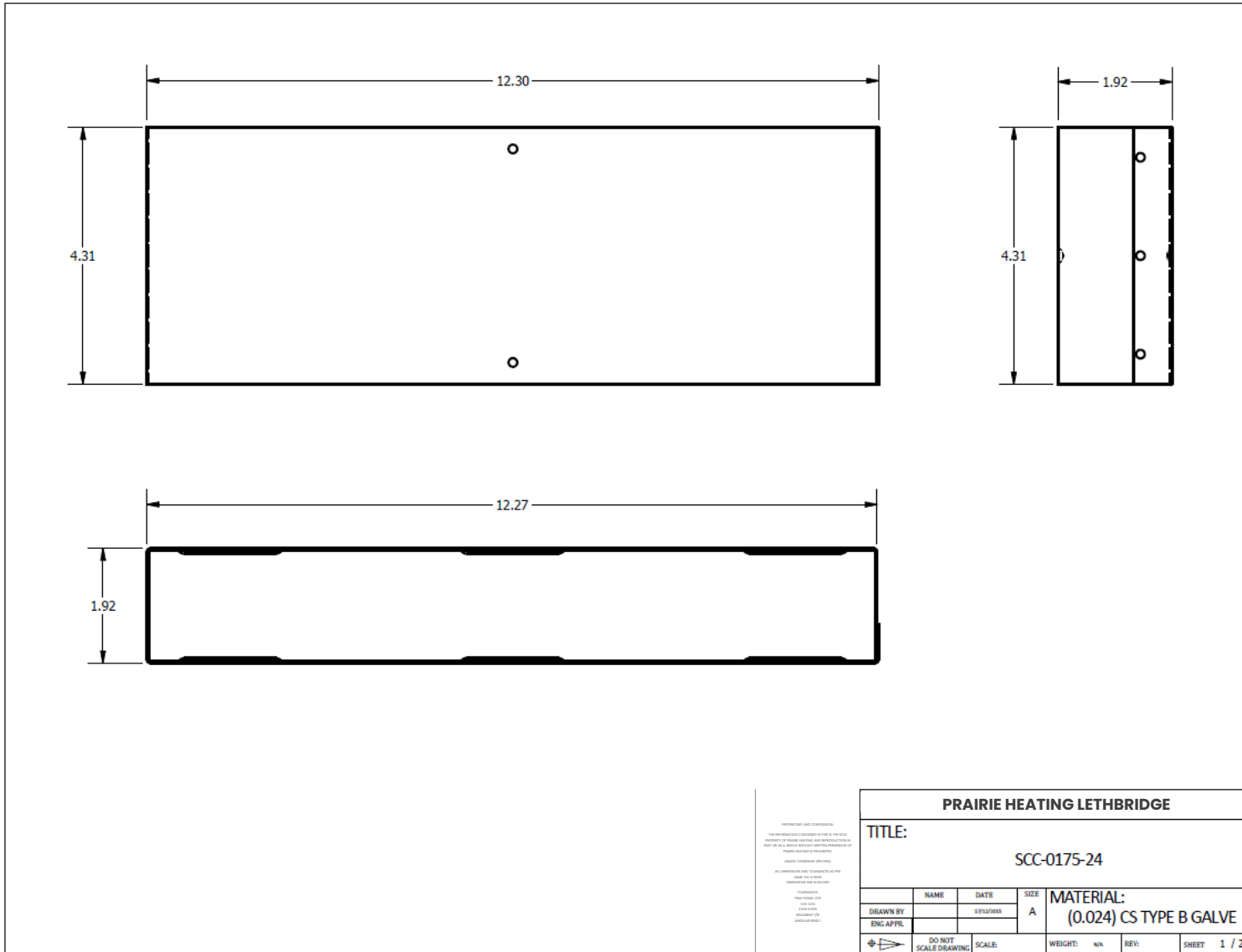
Made in Canada. All Prairie Heating products are guaranteed against defective material.

OPTIONAL CONSTRUCTION

Custom sizes available upon request to suit any and all applications.

PRODUCT CODE	SIZE (IN)	CONSTRUCTION	# PER CARTON
SCC/1750/24	12 x 1.75	24GA	35
SCC/2000/24	12 x 2	24GA	35

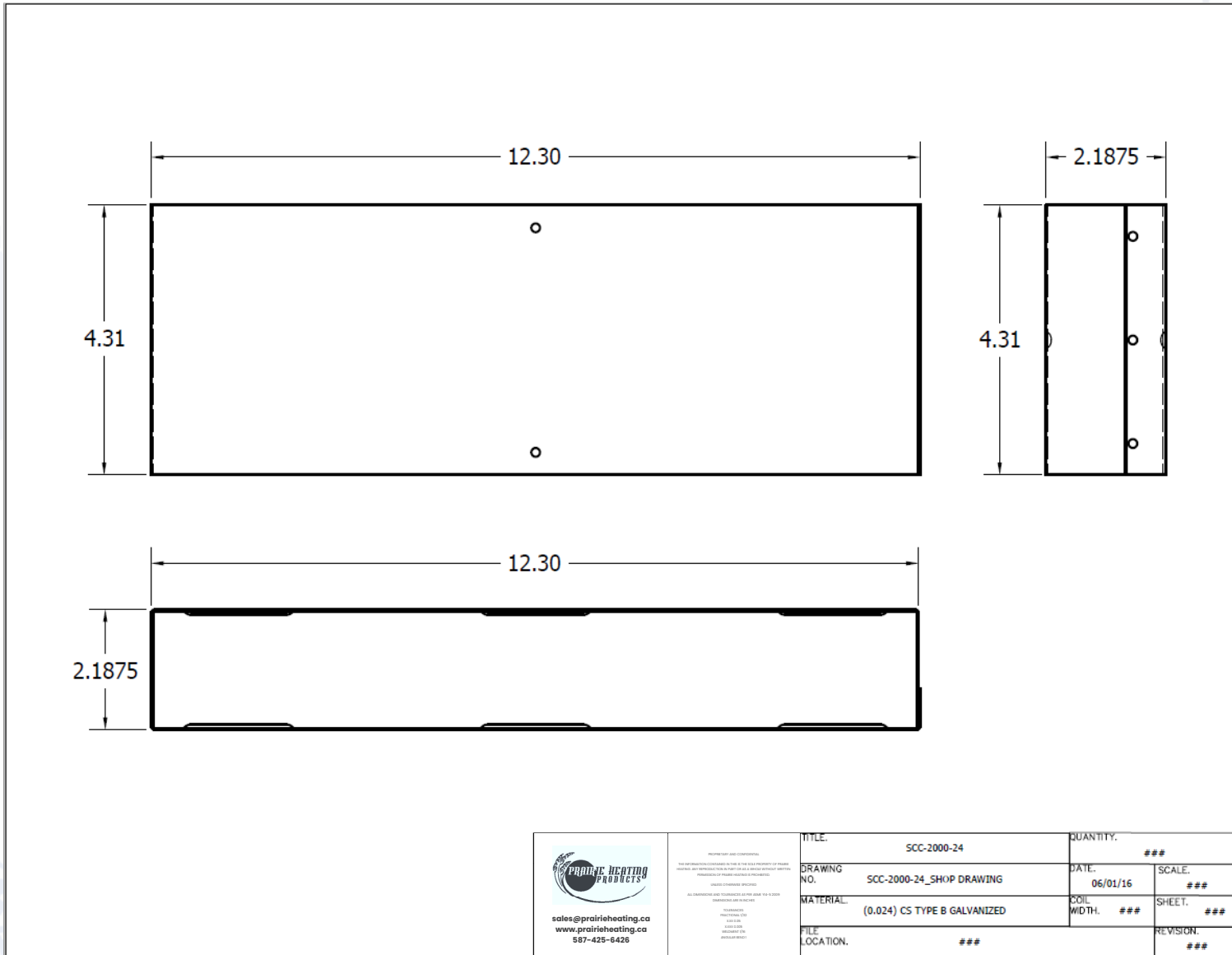
SLAB CONNECTING COLLAR




587-425-6426 | sales@prairieheating.ca | www.prairieheating.ca

Specifications are subject to change without notice or obligation. All Prairie Heating products are guaranteed against defective material.

SLAB CONNECTING COLLAR



 sales@prairieheating.ca www.prairieheating.ca 587-425-6426	ALL DIMENSIONS ARE DIMENSIONS UNLESS OTHERWISE SPECIFIED. UNLESS OTHERWISE SPECIFIED ALL DIMENSIONS ARE DIMENSIONS UNLESS OTHERWISE SPECIFIED. UNLESS OTHERWISE SPECIFIED	TITLE: SCC-2000-24 QUANTITY: ###	DATE: 06/01/16 SCALE: ###	
	DRAWING NO. SCC-2000-24_SHOP DRAWING	MATERIAL: (0.024) CS TYPE B GALVANIZED	COIL WIDTH: ###	SHEET: ###
	FILE LOCATION: ###	REVISION: ###	REVISION: ###	REVISION: ###
	FILE LOCATION: ###	REVISION: ###	REVISION: ###	REVISION: ###

587-425-6426 | sales@prairieheating.ca | www.prairieheating.ca

Specifications are subject to change without notice or obligation. All Prairie Heating products are guaranteed against defective material.