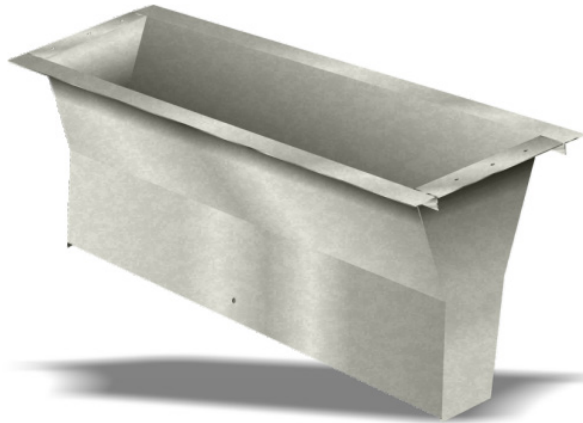


WALL DISCHARGE



DESCRIPTION

The Prairie Heating slab wall discharge cap is used for venting air from inside a building to the outside by way of going through an exterior wall.

CONSTRUCTION

Made of 22GA or 24GA galvanized. Made to be installed with 12" x 1.75" and 12" x 2" Prairie Heating slab duct.

FEATURES

- Optional damper installed

GUARANTEE

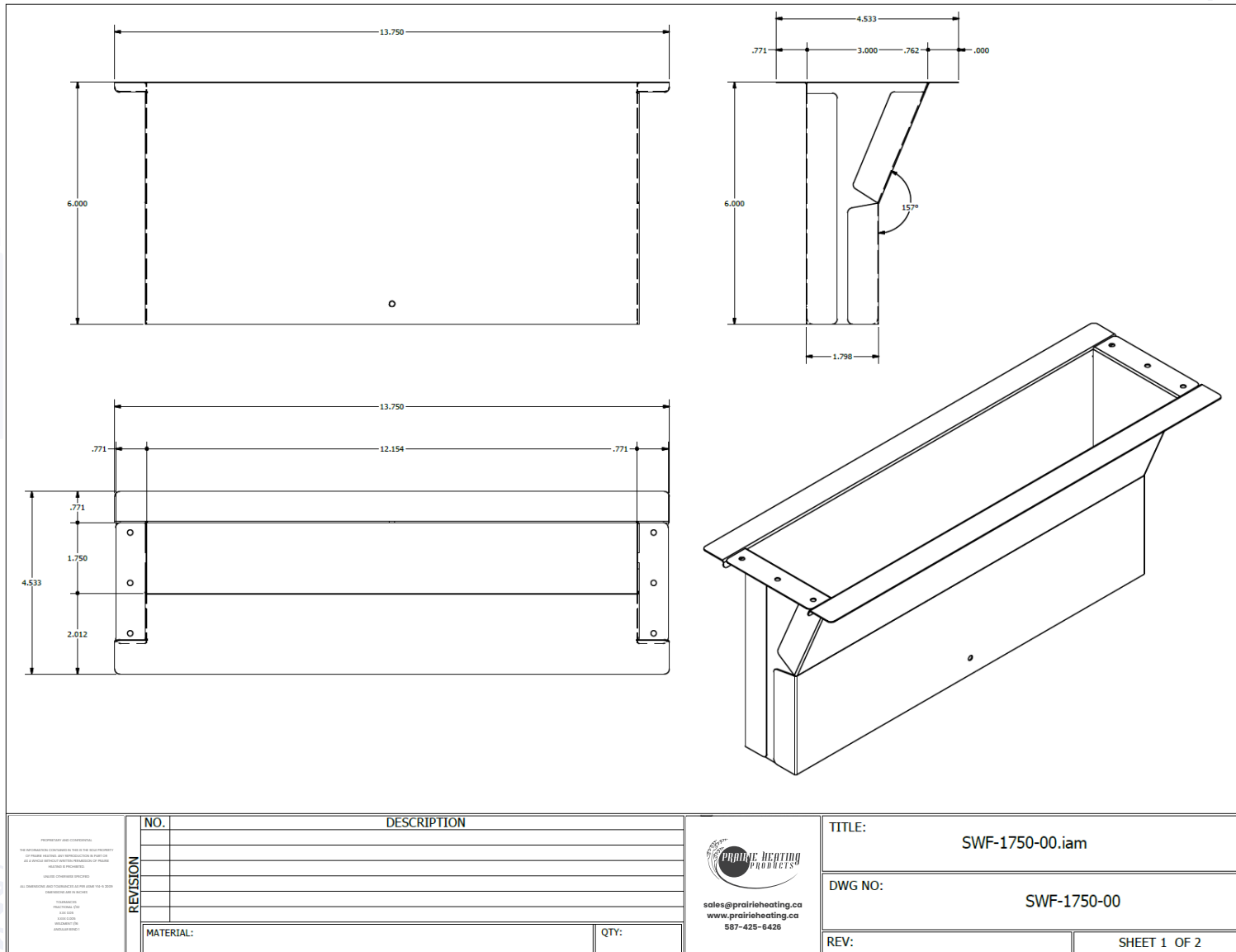
Made in Canada. All Prairie Heating products are guaranteed against defective material. All testing performed by Intertek Testing Services NA Ltd. Warnock Hersey and Hardy Associates Ltd. Pressure rating (-1 to +2 water gauge).

OPTIONAL CONSTRUCTION

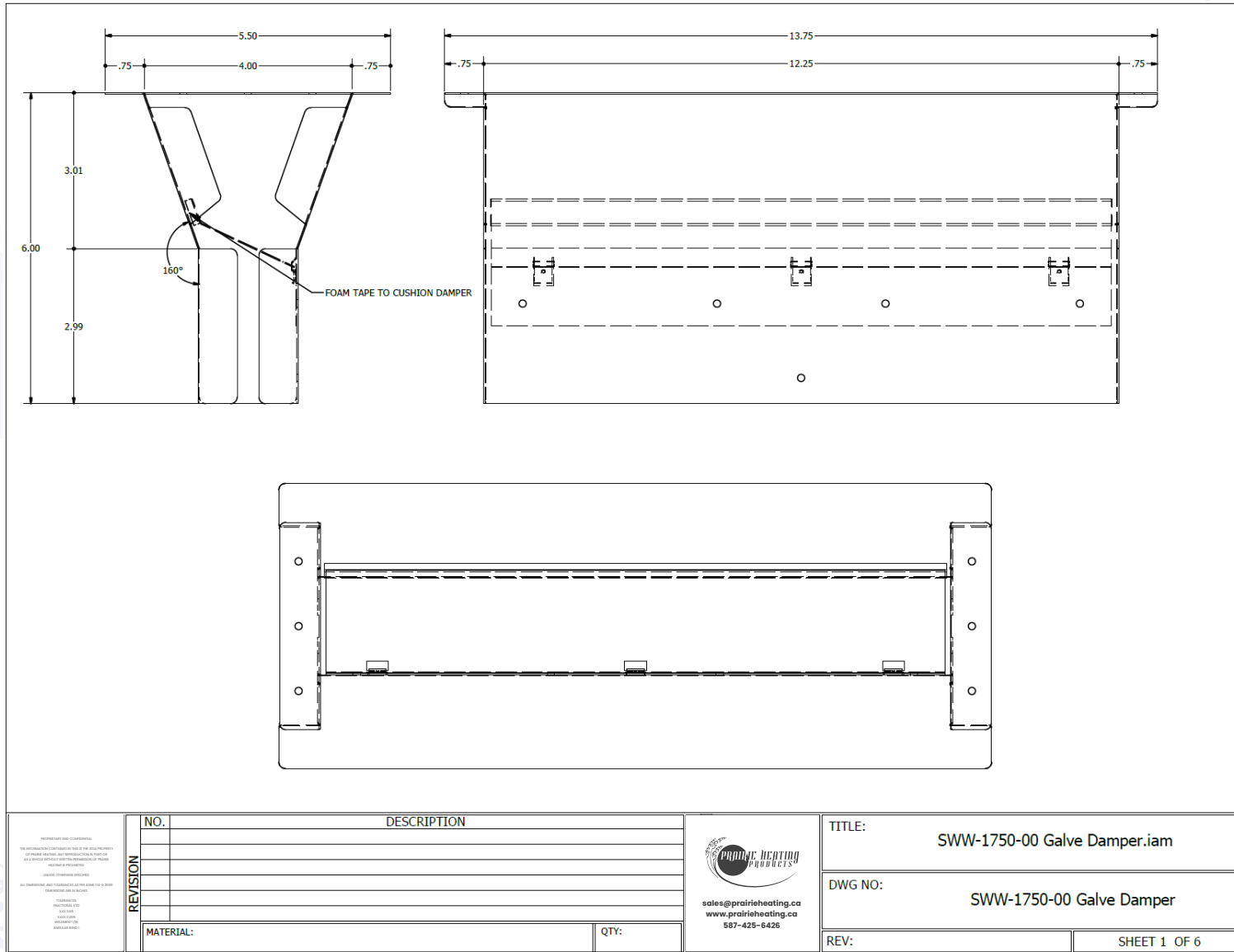
Custom sizes available upon request to suit any and all applications.

PRODUCT CODE	A (IN)	B (IN)	C (IN)	# PER CARTON
SWD/1750/24	12.25	4	1.88	14
SWF/1750/24	12.25	4	1.88	16
SWW/1750/24	12.25	4	1.88	14

WALL DISCHARGE



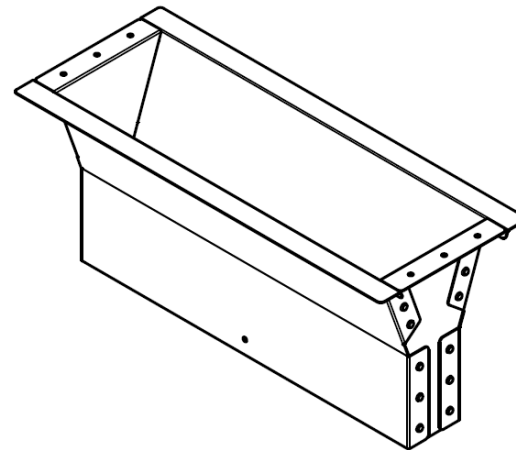
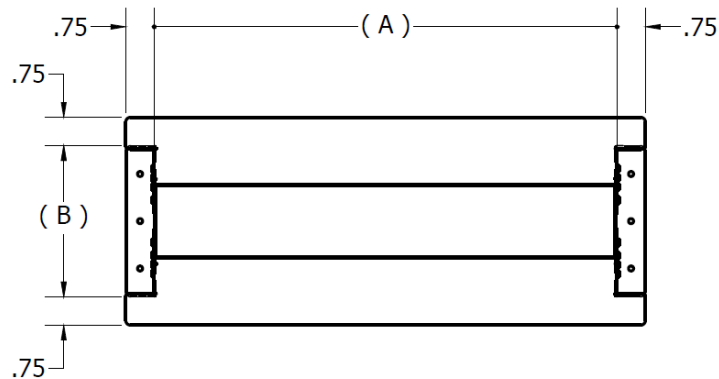
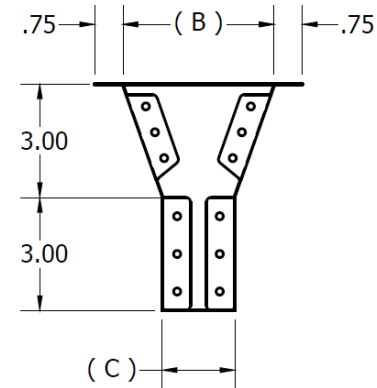
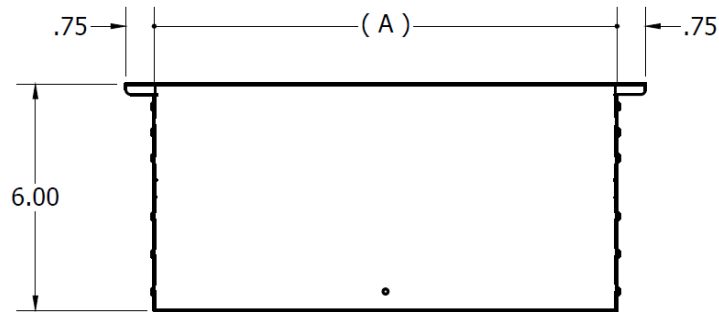
WALL DISCHARGE



587-425-6426 | sales@prairieheating.ca | www.prairieheating.ca

Specifications are subject to change without notice or obligation. All Prairie Heating products are guaranteed against defective material.

WALL DISCHARGE



sales@prairieheating.ca
www.prairieheating.ca
587-425-6426

THE INFORMATION CONTAINED HEREIN IS THE SOLE PROPERTY OF PRAIRIE HEATING AND SHALL REMAIN THE PROPERTY OF PRAIRIE HEATING. IT IS TO BE USED ONLY FOR THE PURPOSES SPECIFIED HEREIN. ALL INFORMATION IS TO BE KEPT CONFIDENTIAL AND NOT TO BE DISCLOSED TO ANY OTHER PARTY WITHOUT THE WRITTEN PERMISSION OF PRAIRIE HEATING.

TITLE		QUANTITY	
SDD-0275-24		###	
DRAWING NO.	DATE	SCALE	
SDD-0275-24_SHOP DRAWING	07/01/16	###	###
MATERIAL	COIL WIDTH	SHEET	
(0.024) CS TYPE B GALVANIZED	###	###	###
FILE LOCATION	REVISION		
###	###		

587-425-6426 | sales@prairieheating.ca | www.prairieheating.ca

Specifications are subject to change without notice or obligation. All Prairie Heating products are guaranteed against defective material.