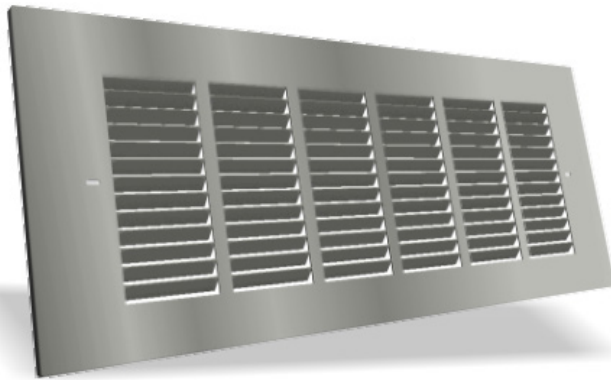


SLAB GRILL



DESCRIPTION

The Prairie Heating slab grill is used to cover Prairie Heating soffit or wall discharge openings to keep out bugs and weather.

CONSTRUCTION

Made from aluminum. Made to be installed with 12" x 1.75" and 12" x 2" Prairie Heating slab duct.

FEATURES

- Louvered for optimal air flow

GUARANTEE

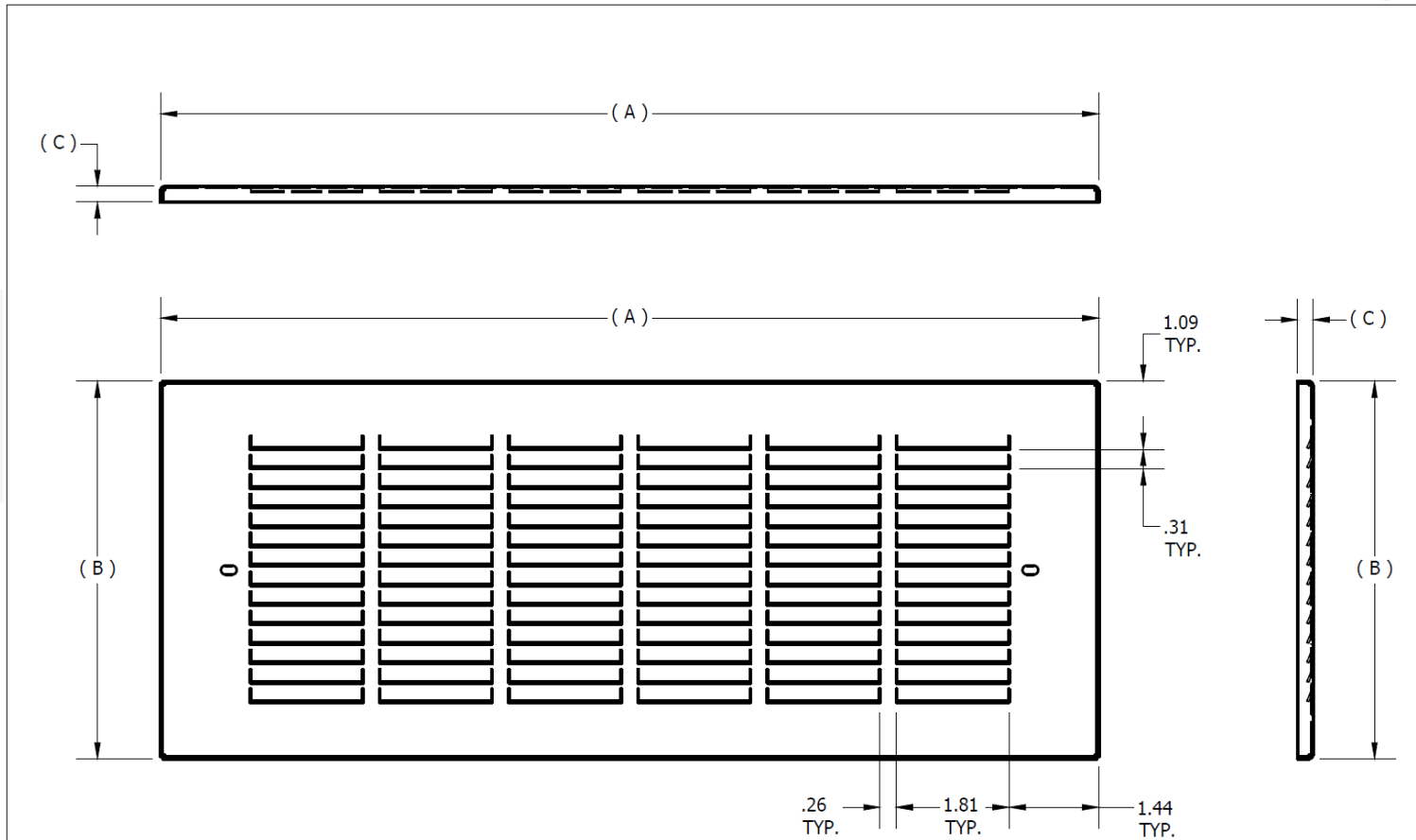
Made in Canada. All Prairie Heating products are guaranteed against defective material. All testing performed by Intertek Testing Services NA Ltd. Warnock Hersey and Hardy Associates Ltd. Pressure rating (-1 to +2 water gauge)

OPTIONAL CONSTRUCTION

Custom sizes available upon request to suit any and all applications.

PRODUCT CODE	A (IN)	B (IN)	C (IN)	# PER CARTON
SSG/00BT/AL	15.0625	6.0625	0.25	100

SLAB GRILL



sales@prairieheating.ca
www.prairieheating.ca
587-425-6426

<small>PROPRIETARY AND CONFIDENTIAL</small> <small>THE INFORMATION CONTAINED HEREIN IS THE SOLE PROPERTY OF PRAIRIE HEATING AND IS TO BE USED ONLY FOR THE PURPOSES SPECIFIED HEREIN. NO PART OF THIS DRAWING IS TO BE REPRODUCED OR TRANSMITTED IN ANY FORM OR BY ANY MEANS, ELECTRONIC OR MECHANICAL, INCLUDING PHOTOCOPYING, RECORDING, OR BY ANY INFORMATION STORAGE AND RETRIEVAL SYSTEM.</small> <small>UNLESS OTHERWISE SPECIFIED</small> <small>ALL DIMENSIONS AND TOLERANCES ARE IN INCHES UNLESS OTHERWISE SPECIFIED</small>		TITLE: SSG-00BT-AL QUANTITY: ###	
DRAWING NO. SSG-00BT-AL_SHOP DRAWING	DATE: 06/01/16	SCALE: ###	
MATERIAL: (0.032) ALUMINUM	COIL WIDTH: ###	SHEET: ###	
FILE LOCATION: ###	REVISION: ###		

587-425-6426 | sales@prairieheating.ca | www.prairieheating.ca

Specifications are subject to change without notice or obligation. All Prairie Heating products are guaranteed against defective material.