

SLAB DUCT



DESCRIPTION

The Prairie Heating slab duct is used to exhaust air from bathroom fans, range hoods, and clothes dryers but can also be used for fresh air intake and supply air.

CONSTRUCTION

Rectangular spiral-seamed duct made to be installed in concrete floors of high-rise buildings.

FEATURES

- Manufactured in 10' lengths
- 3.5" wide reinforcing channel along entire length of duct
- Can be shipped loose or lifts of 1080' for easy hoisting on site

GUARANTEE

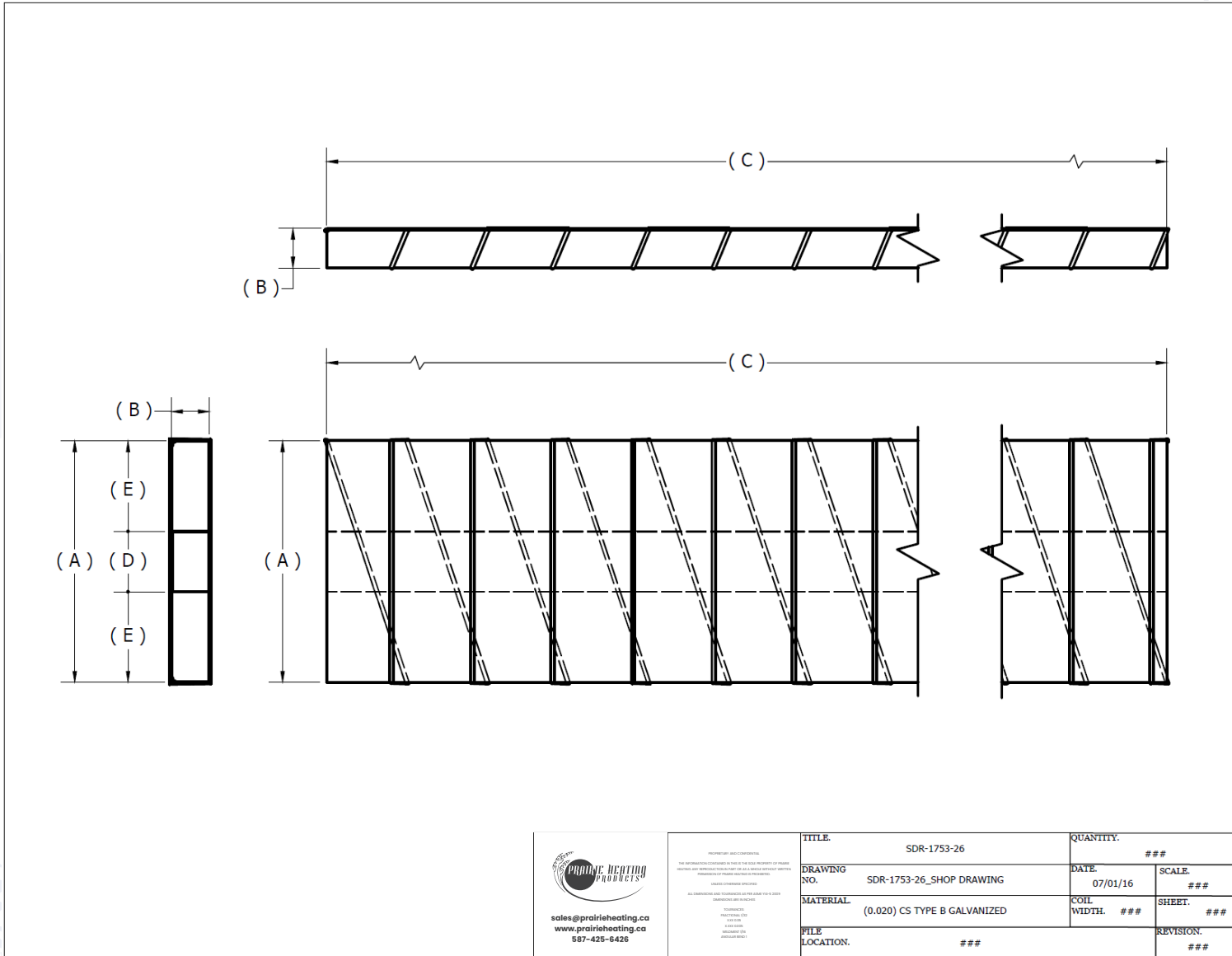
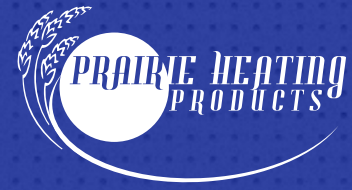
Made in Canada. All Prairie Heating products are guaranteed against defective material. All testing performed by Intertek Testing Services NA Ltd., Warnock Hersey, and Hardy Associates Ltd. Pressure rating (-1 to +2 water gauge)


OPTIONAL CONSTRUCTION

Custom sizes available upon request to suit any and all applications.

PRODUCT CODE	SIZE (A X B)	CHANNEL WIDTH (D)	FEET PER SKID
SDR/1753/26	12" x 1.75"	3.5"	1080'

SLAB DUCT



 <p>sales@prairieheating.ca www.prairieheating.ca 587-425-6426</p>	<p>THE INFORMATION CONTAINED HEREIN IS THE SOLE PROPERTY OF PRAIRIE HEATING AND IS NOT TO BE REPRODUCED OR TRANSMITTED IN ANY FORM OR BY ANY MEANS, ELECTRONIC OR MECHANICAL, INCLUDING PHOTOCOPYING, RECORDING, OR BY ANY INFORMATION STORAGE AND RETRIEVAL SYSTEM.</p> <p>ALL DIMENSIONS ARE TO UNLESS OTHERWISE SPECIFIED.</p> <p>DATE: 07/01/16</p> <p>SCALE: ###</p>	<p>TITLE: SDR-1753-26</p> <p>QUANTITY: ###</p>
	<p>DRAWING NO. SDR-1753-26_SHOP DRAWING</p>	<p>DATE: 07/01/16</p> <p>SCALE: ###</p>
	<p>MATERIAL (0.020) CS TYPE B GALVANIZED</p>	<p>COIL WIDTH: ###</p> <p>SHEET: ###</p>
	<p>FILE LOCATION: ###</p>	<p>REVISION: ###</p>
	<p>REVISION: ###</p>	<p>REVISION: ###</p>

587-425-6426 | sales@prairieheating.ca | www.prairieheating.ca

Specifications are subject to change without notice or obligation. All Prairie Heating products are guaranteed against defective material.