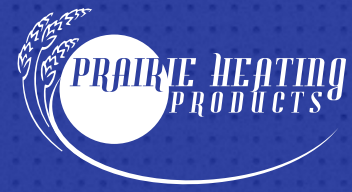


INLET BOOT



DESCRIPTION

The Prairie Heating slab inlet boot is used for transitioning from a round pipe off an exhaust fan outlet to slab exhaust duct.

CONSTRUCTION

Made of 22GA or 24GA galvanized. Made to be installed with 12" x 1.75" and 12" x 2" Prairie Heating slab duct.

FEATURES

- Firestop installed

GUARANTEE

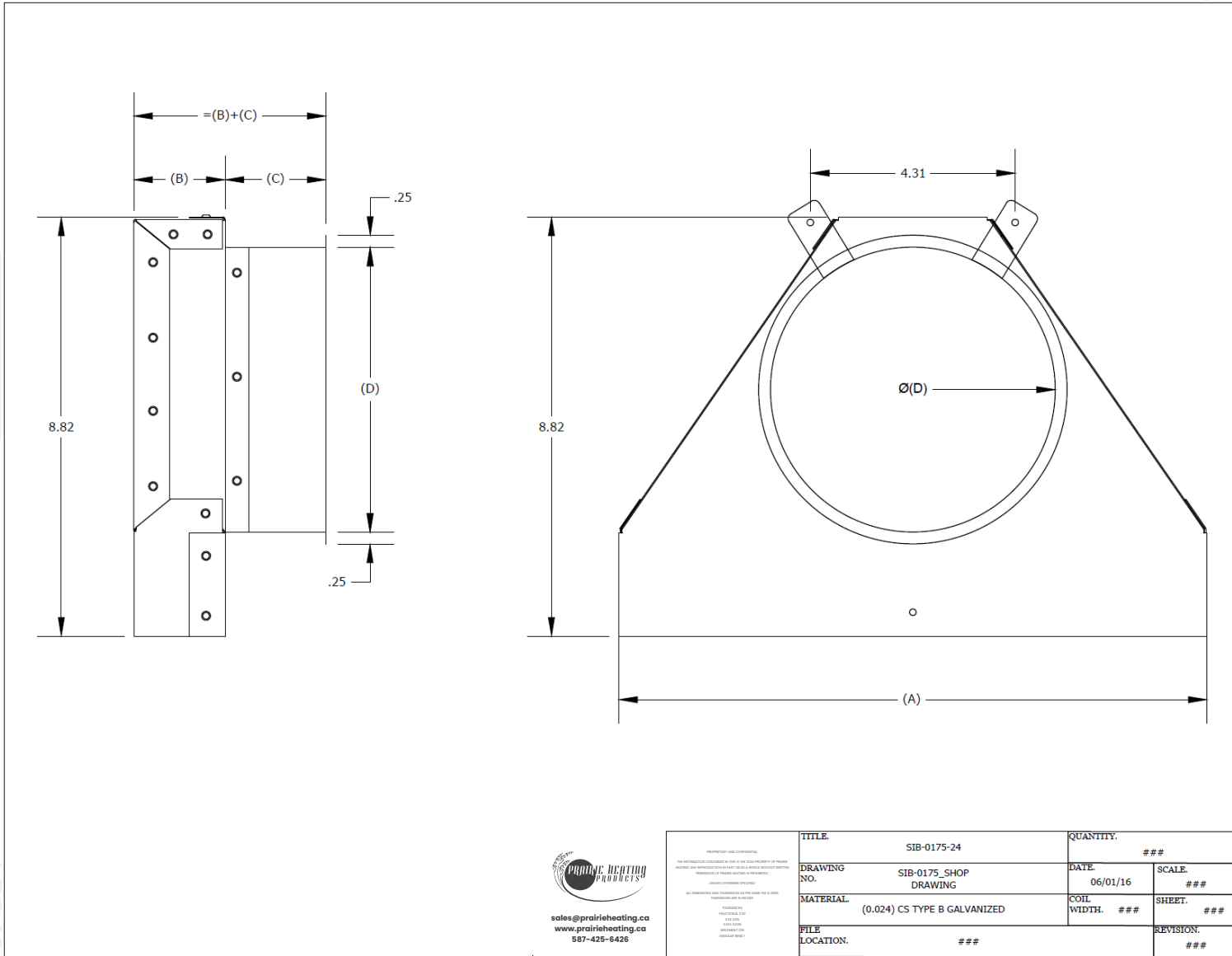
Made in Canada. All Prairie Heating products are guaranteed against defective material. All testing performed by Intertek Testing Services NA Ltd., Warnock Hersey, and Hardy Associates Ltd. Pressure rating (-1 to +2 water gauge)

OPTIONAL CONSTRUCTION

Custom sizes available upon request to suit any and all applications.

PRODUCT CODE	A (IN)	B (IN)	C (IN)	D (IN)	# PER CARTON
SIB/1755/24	12	1.75	2.125	5	12
SIB/1756/24	12	1.75	2.125	6	12
SIB/1758/24	12	1.75	2.125	8	10
SIT/1754/24	12	1.75	3.25	4	10
SIT/1755/24	12	1.75	3.25	5	10
SIT/1756/24	12	1.75	3.25	6	10
SIT/1758/24	12	1.75	3.25	8	6

INLET BOOT



sales@prairieheating.ca
www.prairieheating.ca
587-425-6426

<small>PROPRIETARY AND CONFIDENTIAL</small> <small>THE INFORMATION CONTAINED HEREIN IS THE SOLE PROPERTY OF PRAIRIE HEATING AND IS NOT TO BE DISCLOSED OR REPRODUCED IN ANY MANNER WITHOUT THE WRITTEN PERMISSION OF PRAIRIE HEATING PRODUCTS.</small> <small>UNLESS OTHERWISE SPECIFIED</small> <small>ALL DIMENSIONS ARE UNLESS OTHERWISE SPECIFIED TO BE IN INCHES AND DECIMALS ARE TO NEAREST THOUSANDTH PART.</small> <small>FINISHES:</small> <small>RF - ROUNDED FINISH</small> <small>CS - GALVANIZED</small> <small>MS - POLISHED</small> <small>ST - STAINLESS STEEL</small>	TITLE:	SIB-0175-24	QUANTITY:	###
	DRAWING NO.:	SIB-0175_SHOP DRAWING	DATE:	06/01/16
	MATERIAL:	(0.024) CS TYPE B GALVANIZED	COIL WIDTH:	###
	FILE LOCATION:	###	SHEET:	###
			REVISION:	###

587-425-6426 | sales@prairieheating.ca | www.prairieheating.ca

Specifications are subject to change without notice or obligation. All Prairie Heating products are guaranteed against defective material.